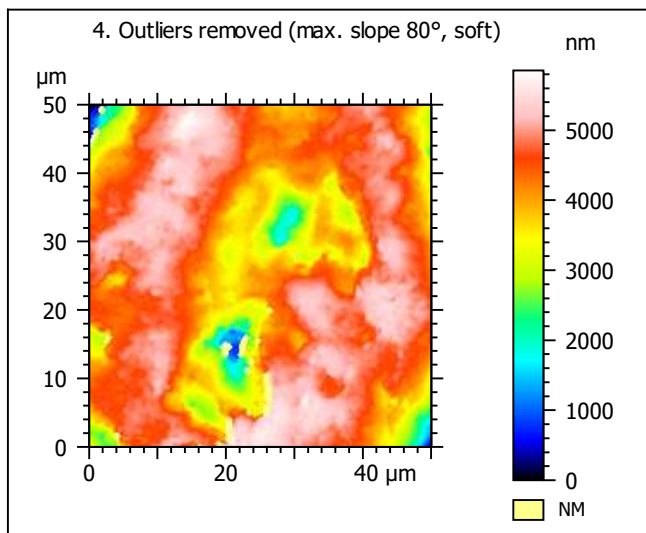
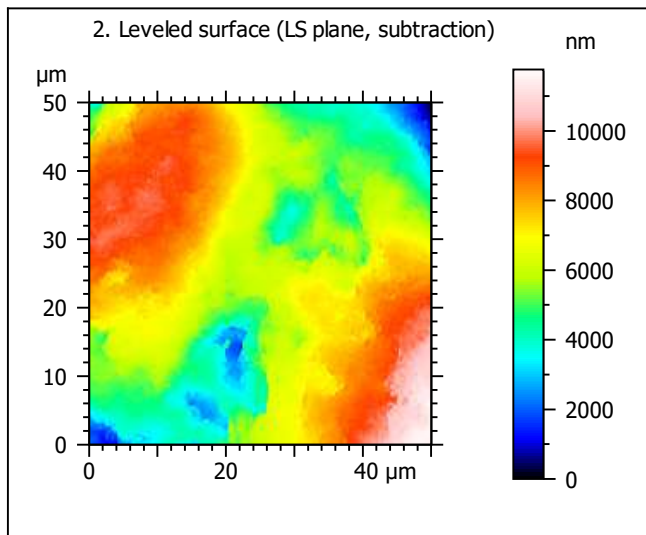
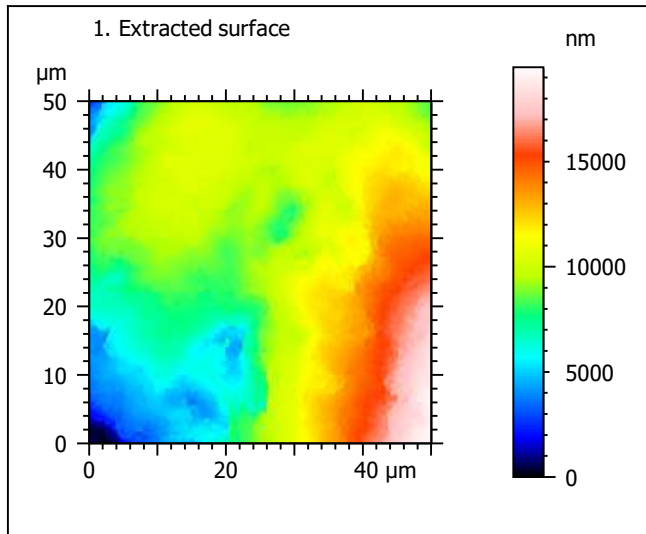
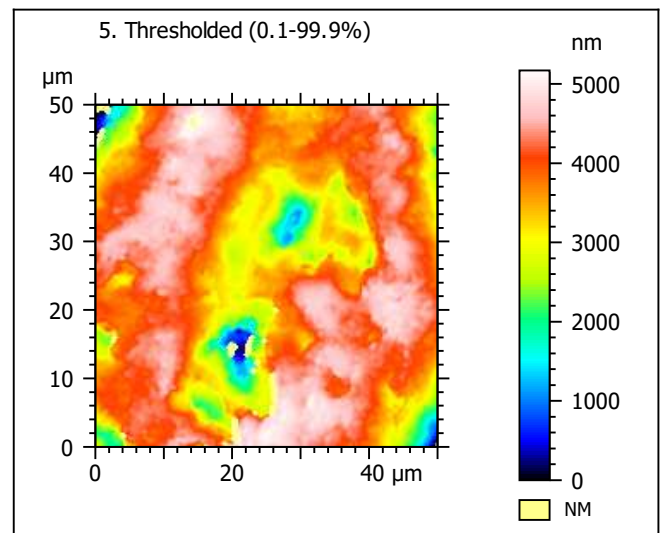
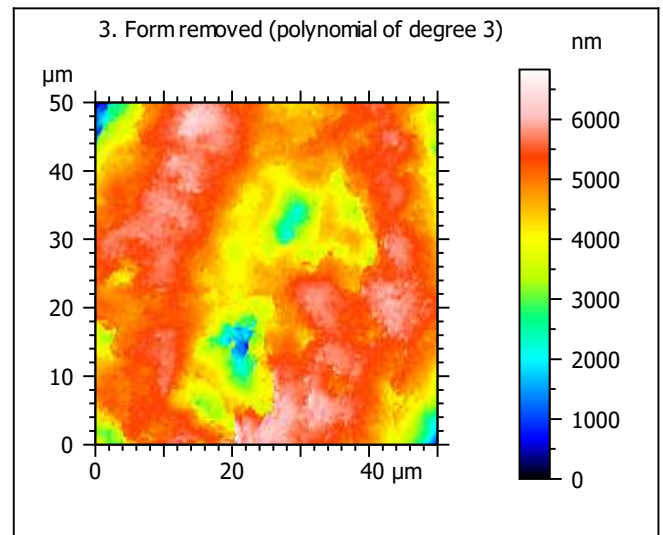


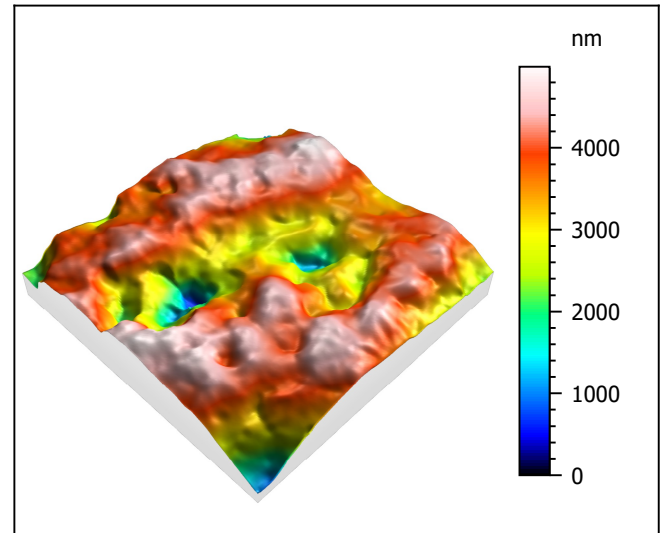
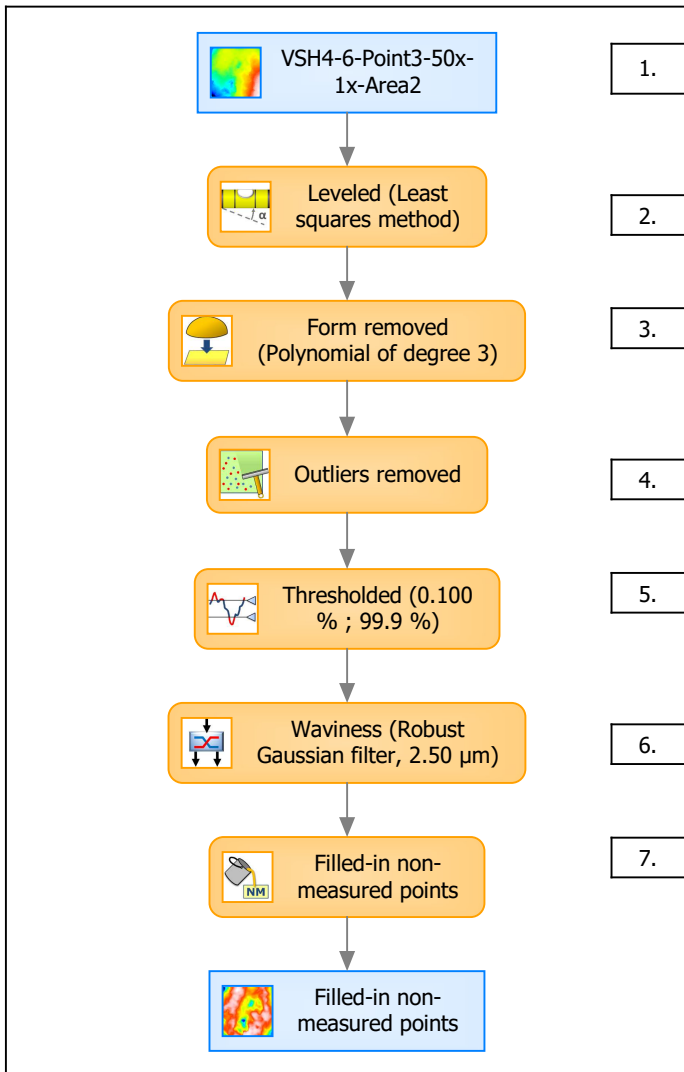
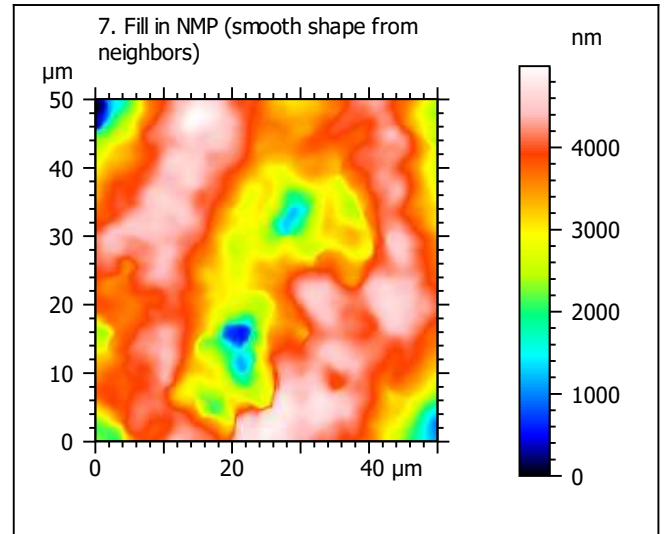
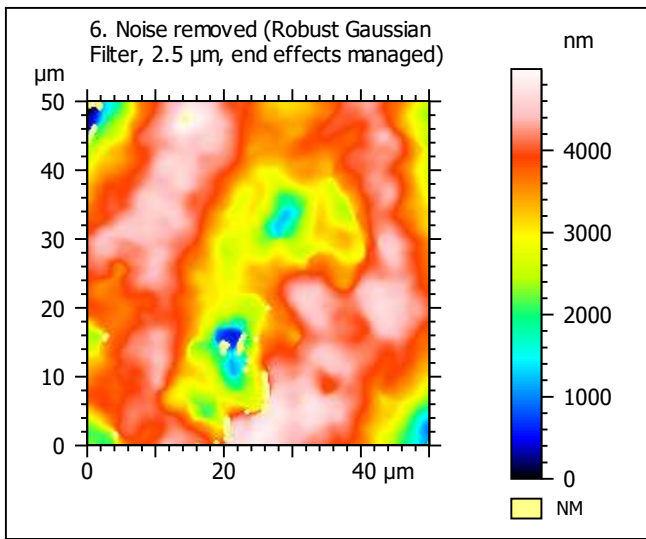
Template to process all extracted 50x50 μm surfaces, acquired with the LEXT 4000 with the 50x/0.95 objective at 1x zoom

A. Processing



| Identity card | | | |
|---------------|---|--------|--|
| Name: | VSH4-6-Point3-50x-1x-Area2 | | |
| File path: | D:\Data\Ant...\VSH4-6-Point3-50x-1x-Area2.sur | | |
| Axis: | X | | |
| Length: | 50.0 | μm | |
| Size: | 201 | points | |
| Spacing: | 0.250 | μm | |
| Axis: | Y | | |
| Length: | 50.0 | μm | |
| Size: | 201 | points | |
| Spacing: | 0.250 | μm | |
| Axis: | Z | | |
| Length: | 19487 | nm | |
| Size: | 7586 | digits | |
| Spacing: | 2.57 | nm | |
| NMP ratio: | 0.00 % (0 Pts) | | |





| Identity card | | | |
|---------------|--|---------------|--|
| Name: | VSH4-6-Point3-50x-1x-Area2 > Leveled (Least... | | |
| Axis: | X | | |
| Length: | 50.0 | μm | |
| Size: | 201 | points | |
| Spacing: | 0.250 | μm | |
| Axis: | Y | | |
| Length: | 50.0 | μm | |
| Size: | 201 | points | |
| Spacing: | 0.250 | μm | |
| Axis: | Z | | |
| Length: | 4991 | nm | |
| Size: | 1943 | digits | |
| Spacing: | 2.57 | nm | |
| NMP ratio: | 0.00 % (0 Pts) | | |

Analyses:

8. ISO 25178

9. Furrow

10. Texture isotropy and direction

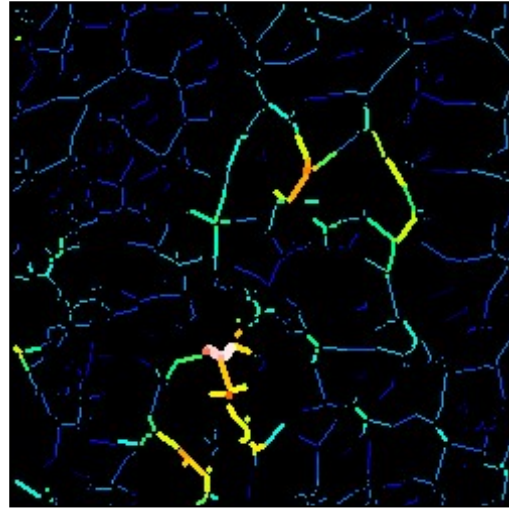
11. SSFA

B. Analyses

8. ISO 25178-2 parameters on surface #7

| ISO 25178 | | |
|--------------------------------|--------|----------------------------------|
| Height Parameters | | |
| Sq | 768 | nm |
| Ssk | -1.13 | |
| Sku | 4.54 | |
| Sp | 1356 | nm |
| Sv | 3635 | nm |
| Sz | 4991 | nm |
| Sa | 606 | nm |
| Functional Parameters | | |
| Smr | 39.7 | % |
| Smc | 810 | nm |
| Sxp | 2101 | nm |
| Spatial Parameters | | |
| Sal | 6.32 | μm |
| Str | 0.510 | |
| Std | 69.5 | ° |
| Hybrid Parameters | | |
| Sdq | 0.321 | |
| Sdr | 4.32 | % |
| Functional Parameters (Volume) | | |
| Vm | 0.0147 | μm ³ /μm ² |
| Vv | 0.825 | μm ³ /μm ² |
| Vmp | 0.0147 | μm ³ /μm ² |
| Vmc | 0.730 | μm ³ /μm ² |
| Vvc | 0.708 | μm ³ /μm ² |
| Vvv | 0.117 | μm ³ /μm ² |

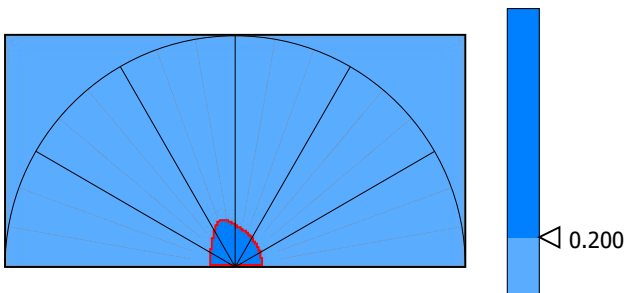
9. Furrow analysis surface #7



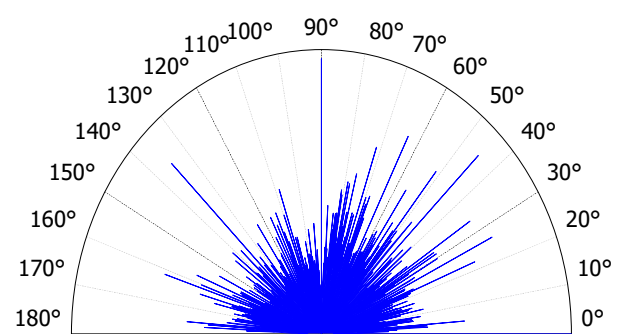
All furrows are shown.

| Parameters | Value | Unit |
|--------------------------|-------|--------|
| Maximum depth of furrows | 2091 | nm |
| Mean depth of furrows | 453 | nm |
| Mean density of furrows | 2338 | cm/cm2 |

10. Texture isotropy and direction on surface #7



| Parameters | Value | Unit |
|---------------------|-------|------|
| Isotropy | 52.6 | % |
| Periodicity | ***** | % |
| Period | ***** | μm |
| Direction of period | ***** | ° |



| Parameters | Value | Unit |
|------------------|-------|------|
| Isotropy | 51.0 | % |
| First Direction | 0.213 | ° |
| Second Direction | 90.0 | ° |
| Third Direction | 45.0 | ° |

